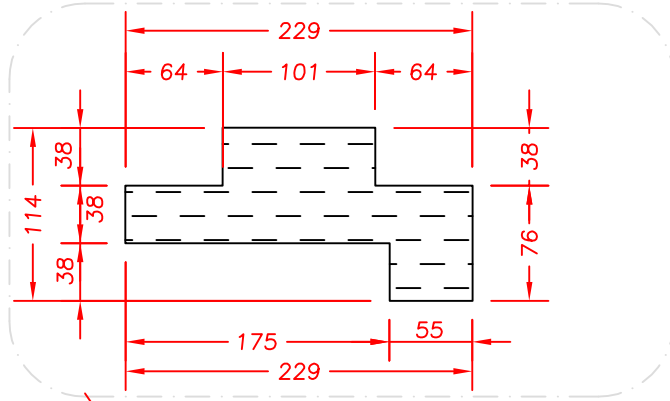
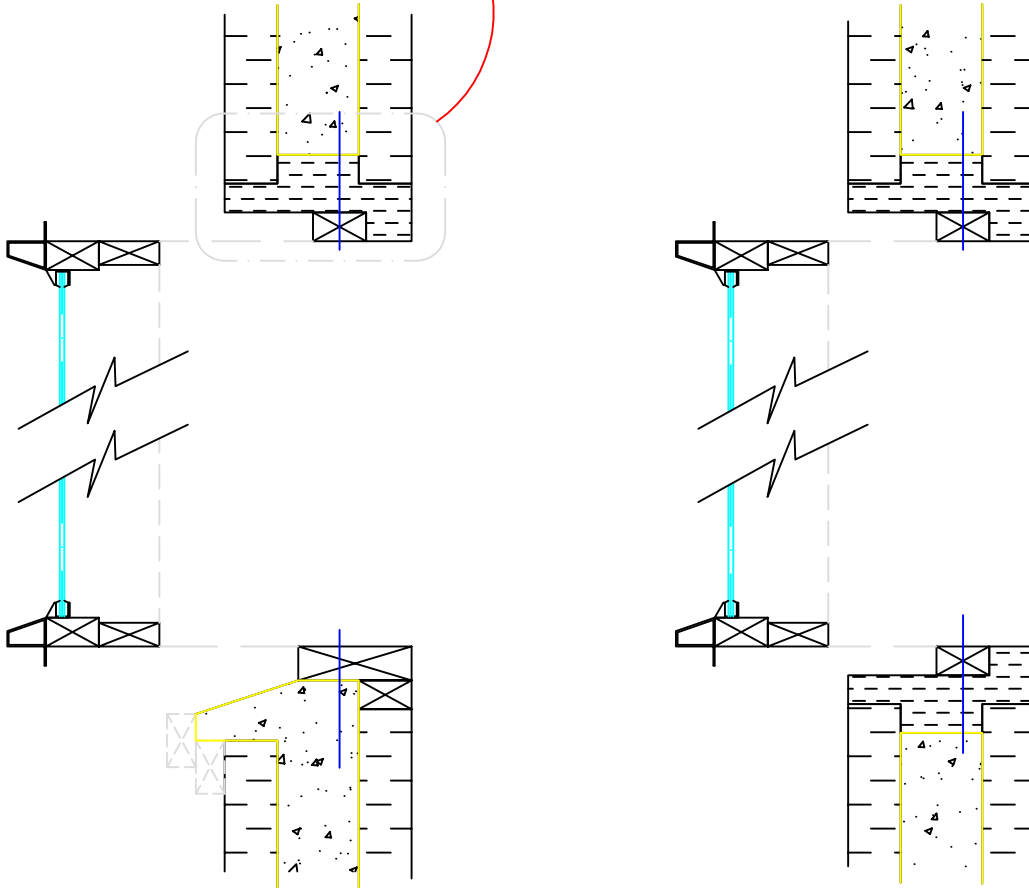


**NOTE:**  
 Foam adhesive is used to attach nom 40 x 70 Buck to EPS profile  
 Completed window bucks are attached to ICF wall block with foam adhesive and screws through 40 x70 into block web.  
 Mono Filliment tape buck to block before placement of concrete.  
 Provide temporary cross bracing in buck and form intefral bottom window sill  
 Ensure top 40 x 70 and bottom 50 x 150 bucks have screws into block centre to be cast into concrete when poured

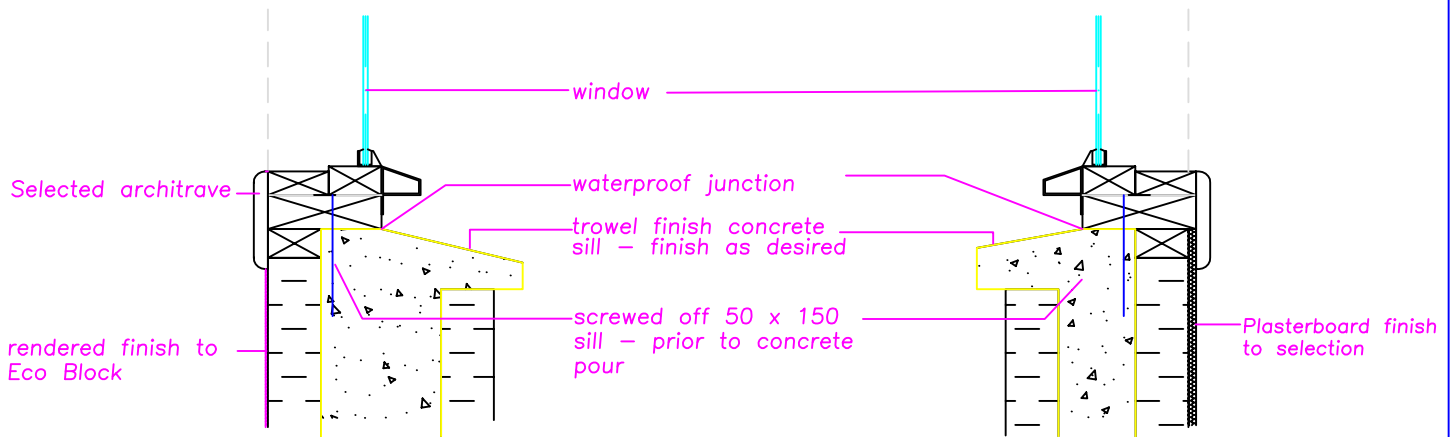


**101 Form Sectional**



**Sectional View**

**Plan View**



**Architrave Internal Finish**

152 concrete core variation

**Plasterboard Internal Finish**

101 concrete core variation



|  |           |          |   |          |                  |
|--|-----------|----------|---|----------|------------------|
| PROJECT  | CLIENT    | DRAWN BY | © THESE DESIGNS, DRAWINGS AND SPECIFICATIONS ARE COPYRIGHT AND THE PROPERTY OF Eco-Block Aust AND MUST NOT BE USED, COPIED OR REPRODUCED IN PART OR WHOLE WITHOUT THE WRITTEN PERMISSION OF Eco-Block Aust. |          |                  |
| DRAWING  | SCALE     | JOB No.  | DWG No.   | DATE     | ISSUE            |
| Window Buck Details  | 1:10 @ A4 | .        | 1 OF 1  | 25/10/07 | A - Construction |
| ALL DIMENSIONS MUST BE CONFIRMED ON SITE PRIOR TO COMMENCEMENT OF OR MANUFACTURING OF ANY ITEM. USE FIGURED DIMENSIONS IN PREFERENCE TO SCALED |           |          |   |          |                  |