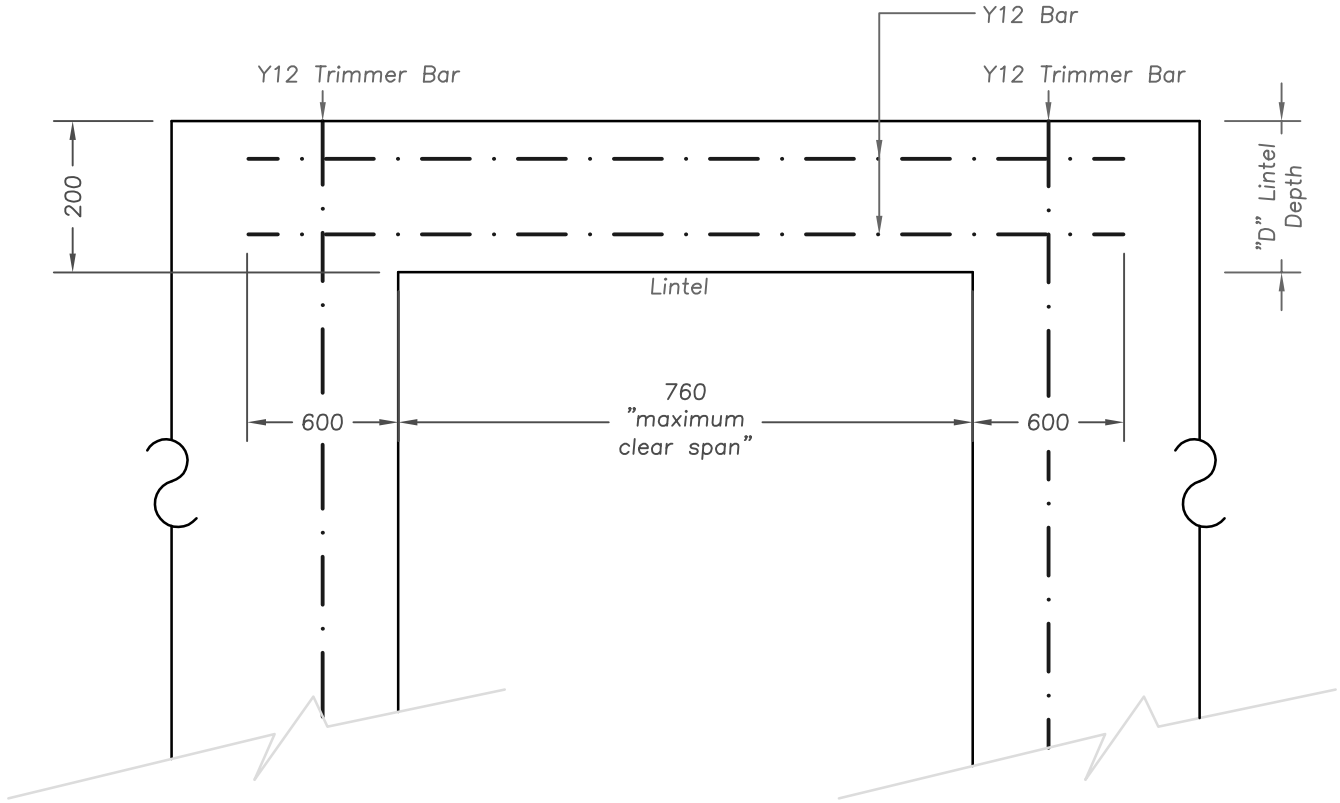
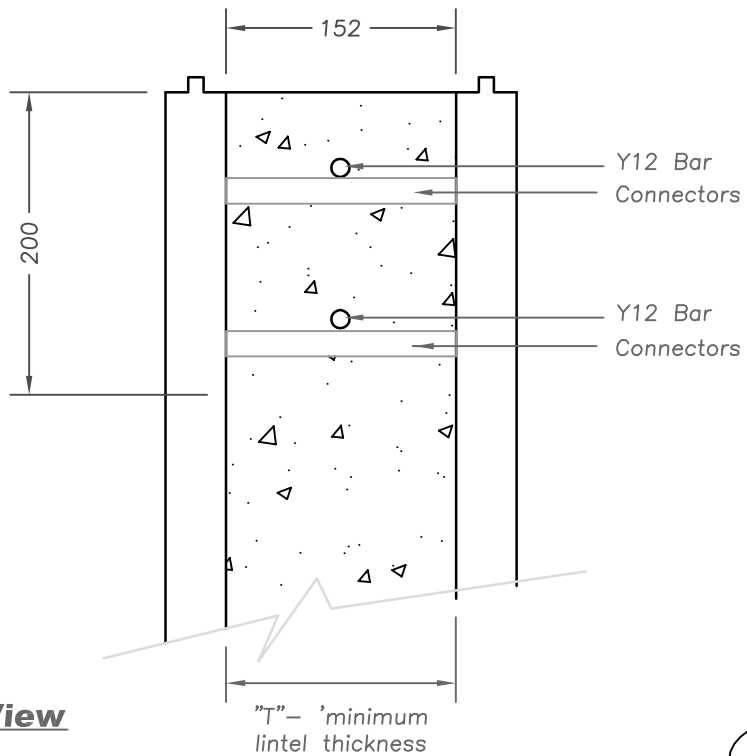


Example as per Table 5.7 - 152mm Flat ICF

Maximum allowable clear span for flat ICF Lintel without stirrups in Load-Bearing walls (N12 or N16 bottom bar size)



Elevational View
1:10



Sectional View
1:5



Eco-Block Aust, Pty Ltd
ABN 56 102 012 993

PROJECT	CLIENT	DRAWN BY	THESE DESIGNS, DRAWINGS AND SPECIFICATIONS ARE COPYRIGHT AND THE PROPERTY OF Eco-Block Aust AND MUST NOT BE USED, COPIED OR REPRODUCED IN PART OR WHOLE WITHOUT THE WRITTEN PERMISSION OF Eco-Block Aust.			
Flat Lintel - 152mm	1 OF 1	AD	DATE	ISSUE	ALL DIMENSIONS MUST BE CONFIRMED ON SITE PRIOR TO COMMENCEMENT OF OR MANUFACTURING OF ANY ITEM. USE FIGURED DIMENSIONS IN PREFERENCE TO SCALED	
SCALE	JOB No.	DWG No.	04/02/08	A - Construction		
1:5/10 @ A4						