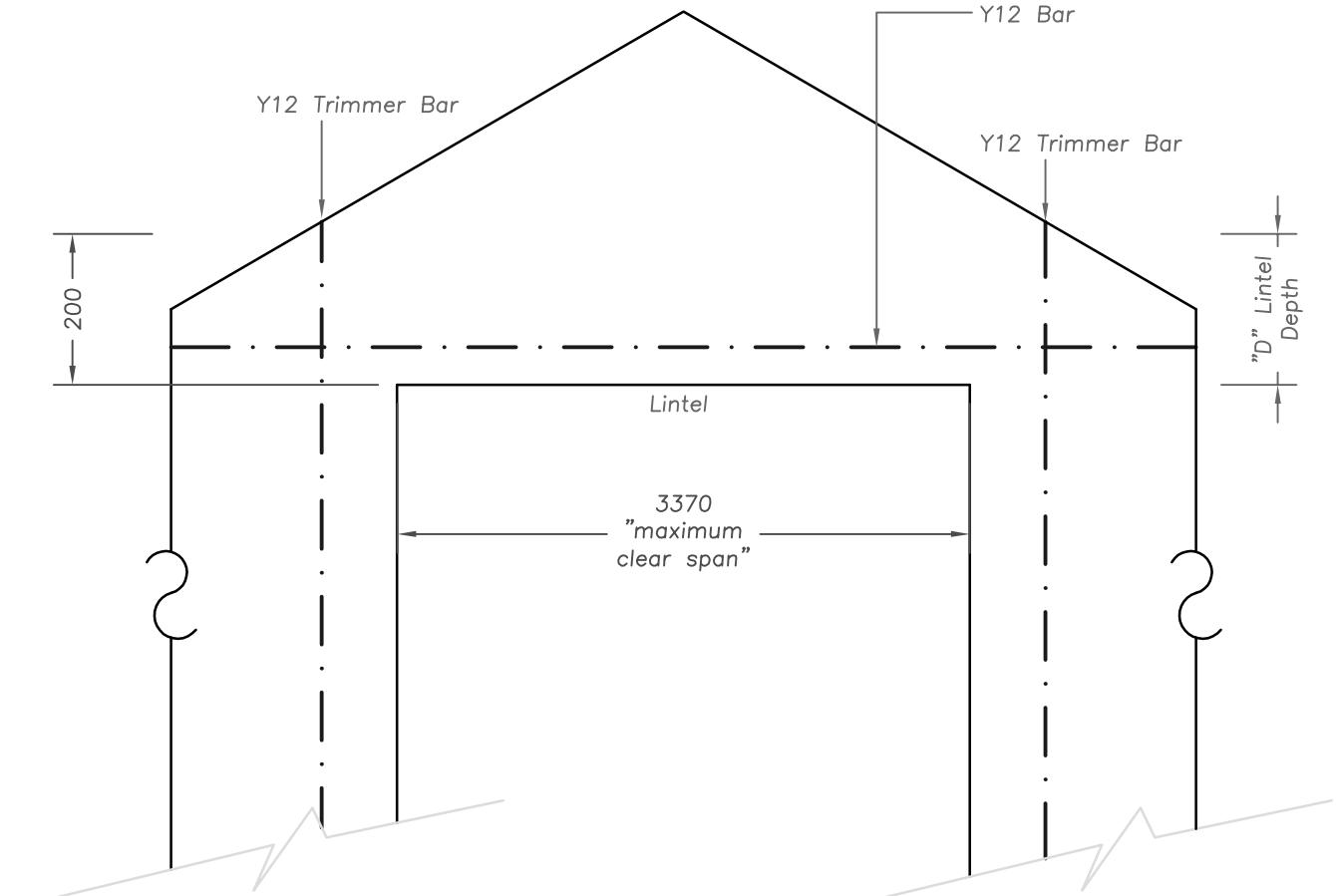
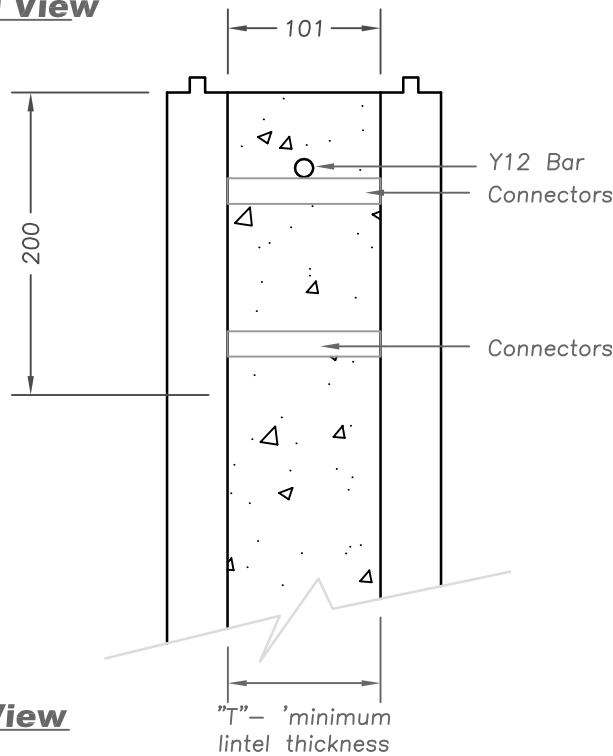


**Example as per Table 5.14 - 101mm Flat ICF**

**Maximum allowable clear spans for flat ICF Lintel in Gable Ends (Non-Load-Bearing) walls without stirrups (N12 bottom bar size)**



**Elevational View**  
1:10



**Sectional View**  
1:5



PROJECT	CLIENT	DRAWN BY	AD	THESE DESIGNS, DRAWINGS AND SPECIFICATIONS ARE COPYRIGHT AND THE PROPERTY OF Eco-Block Aust AND MUST NOT BE USED, COPIED OR REPRODUCED IN PART OR WHOLE WITHOUT THE WRITTEN PERMISSION OF Eco-Block Aust.		
DRAWING Gable Ends Flat Lintel - 101mm	SCALE 1:5/10 @ A4	JOB No.	DWG No. 1 OF 1	DATE 04/02/08	ISSUE A - Construction	ALL DIMENSIONS MUST BE CONFIRMED ON SITE PRIOR TO COMMENCEMENT OF OR MANUFACTURING OF ANY ITEM. USE FIGURED DIMENSIONS IN PREFERENCE TO SCALED