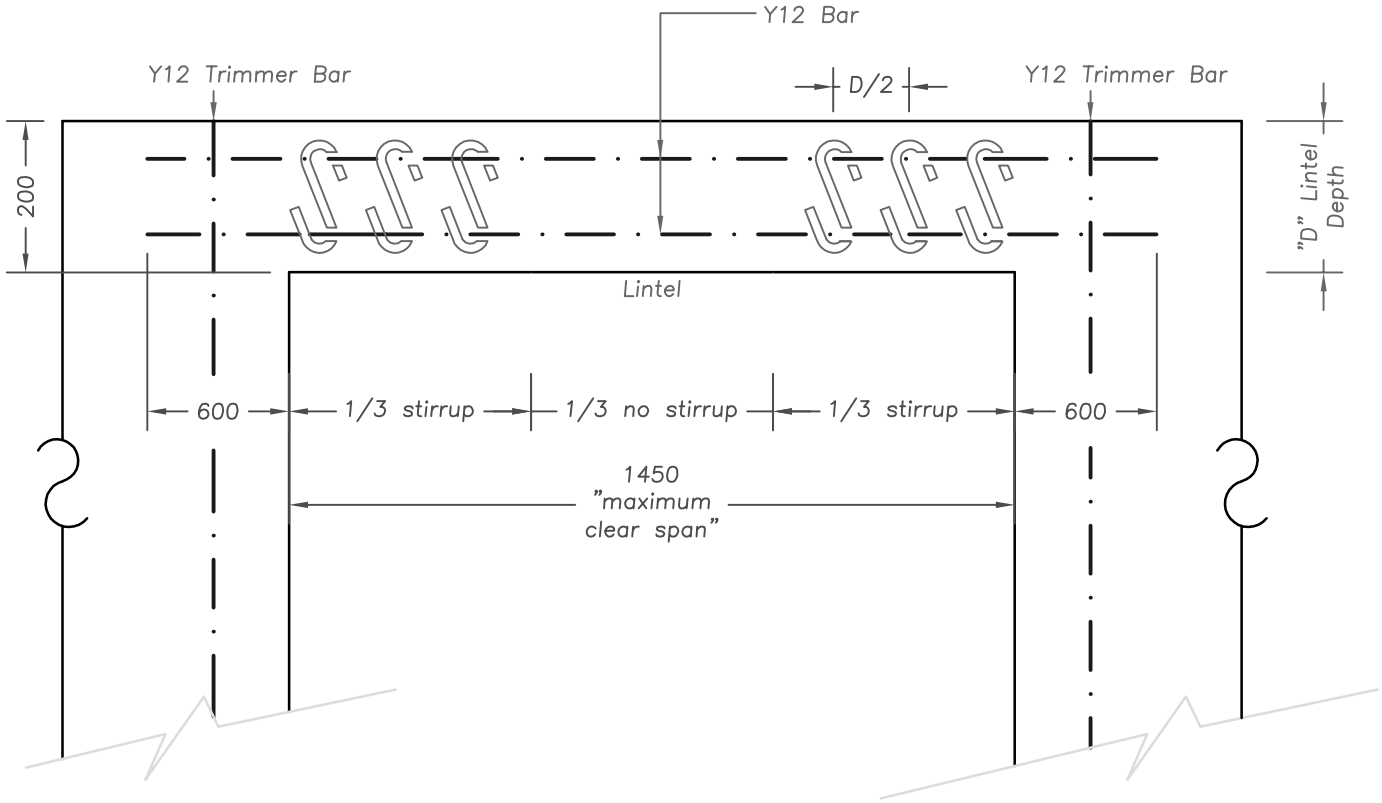
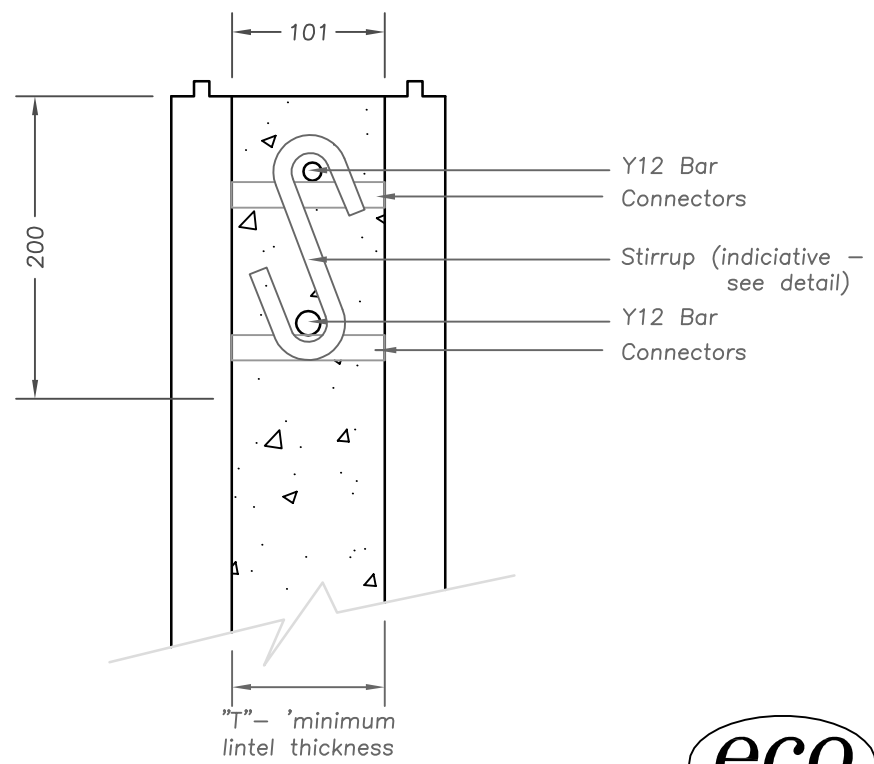


**Example as per Table 5.8A - 101mm Flat ICF**

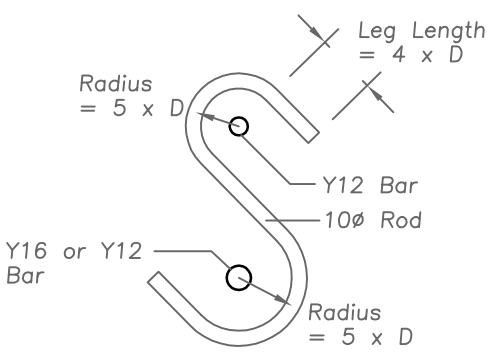
**Maximum allowable clear span for flat ICF Lintel with stirrups in Load-Bearing walls (N12 bottom bar size)**



**Elevational View**  
NTS



**Sectional View**  
1:5



**Typical Stirrup Detail**  
1:5



Eco-Block Aust, Pty Ltd  
ABN 56 102 012 993

PROJECT	CLIENT	DRAWN BY	THESE DESIGNS, DRAWINGS AND SPECIFICATIONS ARE COPYRIGHT AND THE PROPERTY OF Eco-Block Aust AND MUST NOT BE USED, COPIED OR REPRODUCED IN PART OR WHOLE WITHOUT THE WRITTEN PERMISSION OF Eco-Block Aust.		
DRAWING	SCALE	JOB No.	DWG No.	DATE	ISSUE
Flat Lintel - 101mm + StIRRUP	1:5/10 @ A4		1 OF 1	04/02/08	A - Construction