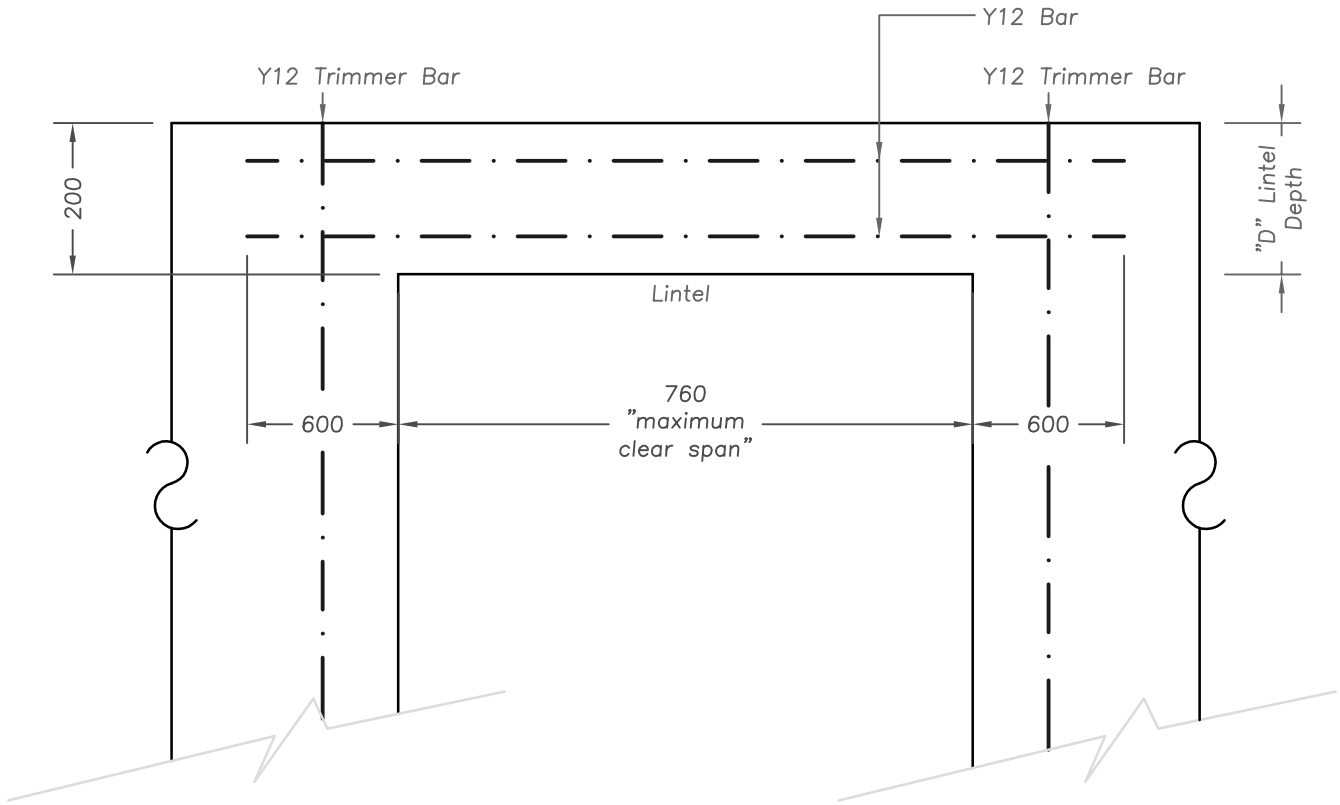
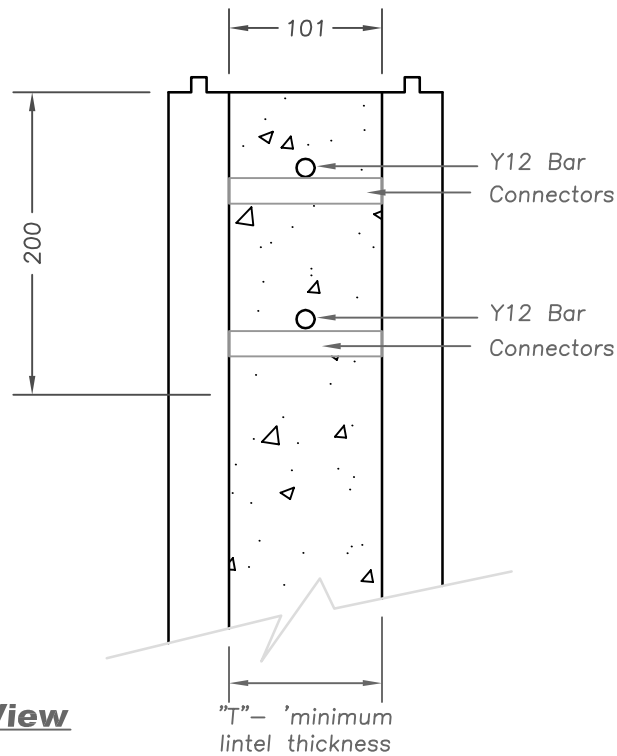


Example as per Table 5.7 - 101mm Flat ICF

Maximum allowable clear span for flat ICF Lintel without stirrups in Load-Bearing walls (N12 or N16 bottom bar size)



Elevational View
1:10



Sectional View
1:5



Eco-Block Aust, Pty Ltd
ABN 56 102 012 993

PROJECT	CLIENT	DRAWN BY	AD			<small>THESE DESIGNS, DRAWINGS AND SPECIFICATIONS ARE COPYRIGHT AND THE PROPERTY OF Eco-Block Aust AND MUST NOT BE USED, COPIED OR REPRODUCED IN PART OR WHOLE WITHOUT THE WRITTEN PERMISSION OF Eco-Block Aust. ALL DIMENSIONS MUST BE CONFIRMED ON SITE PRIOR TO COMMENCEMENT OF OR MANUFACTURING OF ANY ITEM. USE FIGURED DIMENSIONS IN PREFERENCE TO SCALED</small>
DRAWING Flat Lintel - 101mm	SCALE 1:5/10 @ A4	JOB No.	DWG No. 1 OF 1	DATE 04/02/08	ISSUE A - Construction	